

General Description

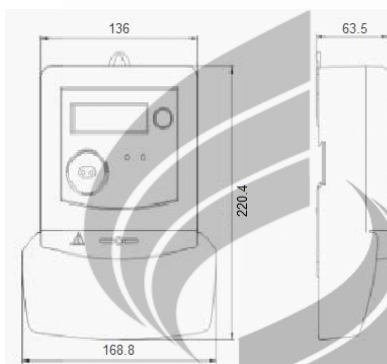
It adopts special large scale integrated circuit and international advance technology of digital and SMT technique and so on. Its general goal is high reliability and multi-function. It is carried out in every step of design, producing, testing, aging and calibration. It's easy to realize the modern managing function.



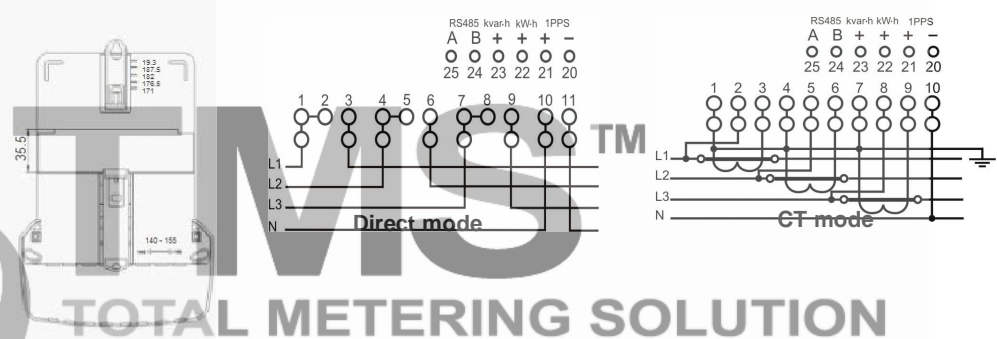
Functions & characteristics

1. Instantaneous kW, V, A, PF measurable.
2. Measure Maximum Demand. The time interval is 30 minutes.
3. Last 12 months billing history energy & MD.
4. Record active and reactive load data.
5. Meter has RS485 communication which can read and set meter parameters.

Dimensions



Wiring Diagram



Technical Data

Meter Type	Unit	DTS353
Type of Connection		Direct / CT
Wiring		3 Phase 4 Wire
Standard Reference Voltage	V	3 x 240/415
Rated Freque	Hz	50
Rated (Max.) Current	A	5(100) / 5(6)
Meter Constant	Imp/kWh	800 / 1200
Starting Current	I _b	0.4%
Current Circuit Consumption at Nominal Charge	W	<1.0
Voltage Circuit Consumption at Nominal Charge	W VA	<1.0 < 0.5
Accuracy Class		Class 1 of IEC61036
Accuracy	%	Active 1.0, Reactive 2.0
Dimensions	mm	168.8 x 63.5 x 220.4